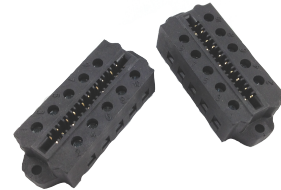
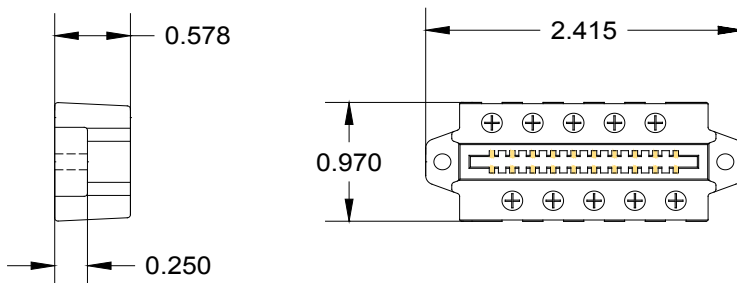


PCB1B10A

DESCRIPTION

The HESCO/RLS PCB1B10A card edge connectors accommodate the **HE642C** series surge protectors. The connectors are keyed with a plastic keying pin to avoid wrong way insertion. High grade polyester insulator material ensures impact resistance and high temperature tolerance. Screws are steel and tubular contacts are brass.

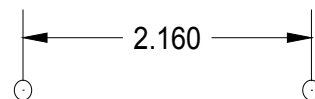
DIMENSIONS



FEATURES

- 10 Position Connector
- Gold PC Contact plating
- .156" Centerline
- 90 Degree Screw Angle
- #6 Phil-Slot Steel Screw
- Maximum Current = 10 AMPS
- Operating Voltage = 250V
- Recommended Torque = 5-8 in-lbs

MOUNTING



HESCO/RLS

220 Springview Commerce Drive
Unit 190
DeBary, FL 32713
Fax 407.321.6747

For more information and product support call us at...

1-800-547-4868